

PARTICIPATIVE TECHNIQUE TEMPLATE

Name of the technique: **World Café**

Minimum number
of participants: **20/25**

Maximum number
of participants: **NA**

Objective of the technique:

Identify innovative strategies
for social change

Specific context requirements:

- Welcoming environment
- Strategies to avoid endless discussions among participants at the tables

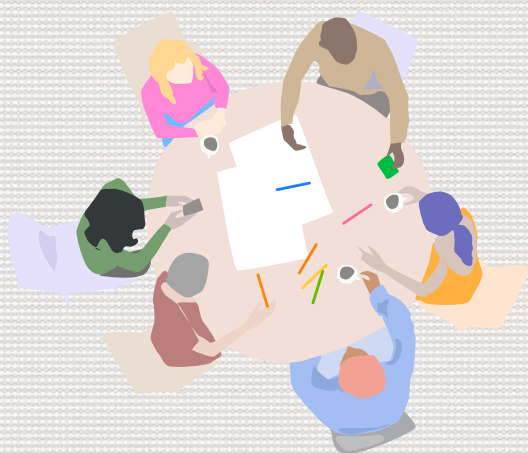
Instructions step by step:

1. Give a name to the theme indicative of the topic
2. Choose a cosy and informal venue
3. Define one single question or one per table (5-6 tables)
4. One host person per table that encourages participants to express their ideas through drawings, key-words, sentences
5. Each turn has a certain duration: 20-30 minutes
6. New turn: different starting point
7. After visiting each table, participants return to their starting tables and synthesise the findings
8. Group discussion on the most important ideas from each table



Required materials:

- Small round tables and chairs
- Large sheets of paper and markers, pencils, and sticky notes of different colours



Advantages:

- Easily applicable in communities or organisations
- Facilitates an in-depth look into the theme to find more diversified solutions

Disadvantages:

- It is difficult to mobilise people
- Hosts persons should have participatory techniques and skills

When to use:

- Co-production of knowledge about a problem or a community and the search for solutions